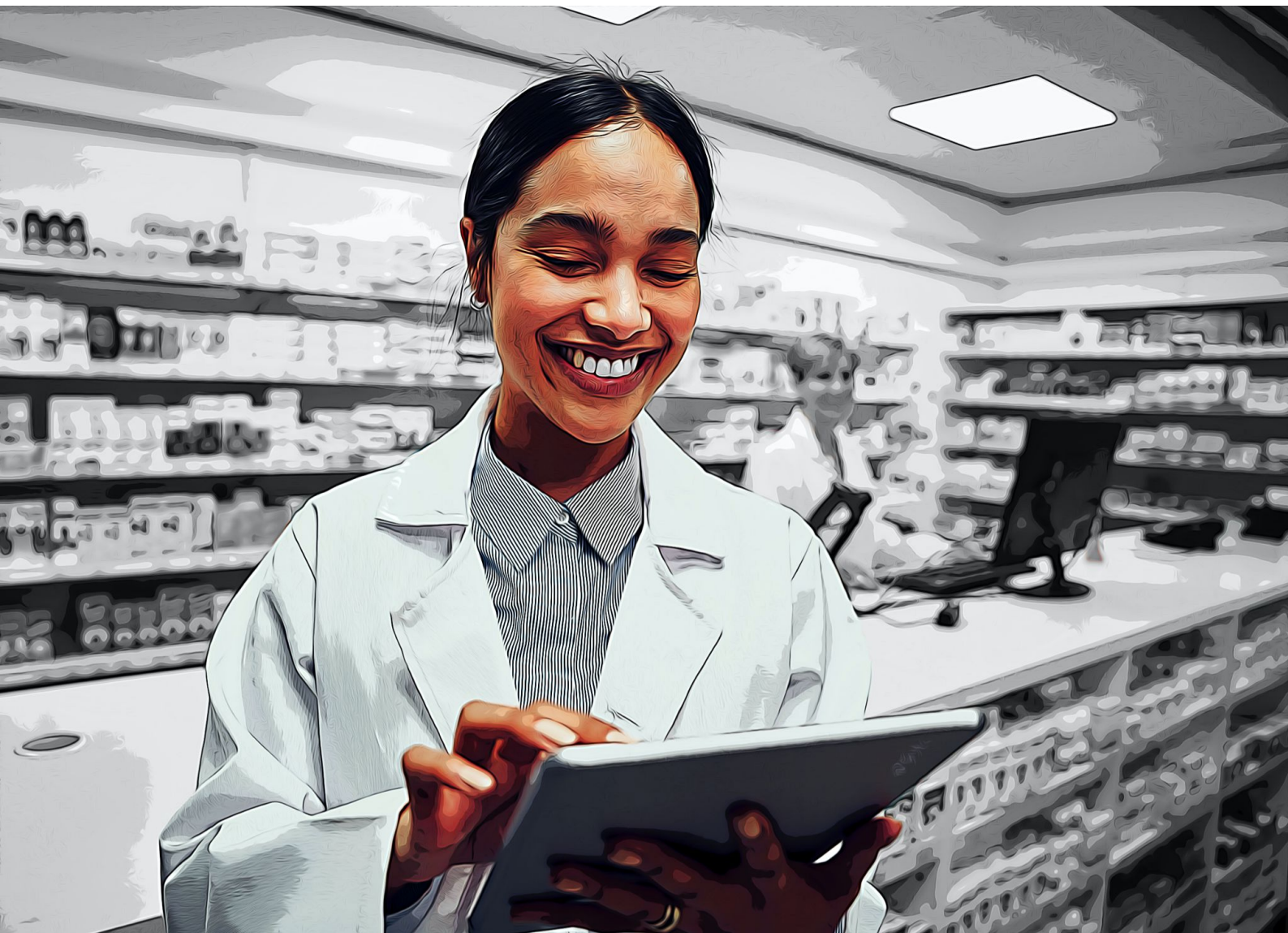


amplifying productivity for Wellness Forever's frontline workforce



about the customer



Life. Unlimited.

Founded in 2008, Wellness Forever is a leading pharmacy retail chain in India with more than 200 stores and 5000+ employees



challenges



disprz solution

existing L&D solution was time-consuming, expensive and non-scalable

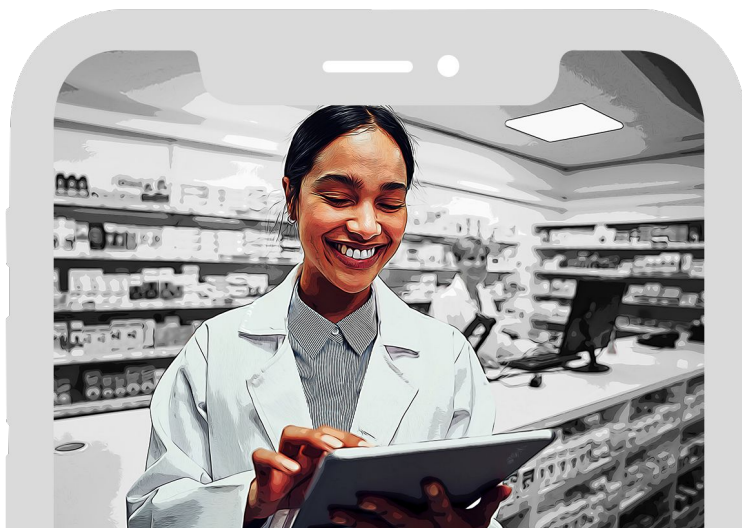
launched a scalable app used by all store managers across all outlets. **onboarding at scale** within 30 days to expedite time-to-productivity

no formal method of communicating SOPs and procedures led to a high risk of drop in performance

staying up-to-date through **micro-learning content** on how to stock up medicines, prescribe the right drugs etc., powered by an AI content recommendation engine

need for KPI-linked coaching to evaluate overall performance

KPI-driven learning by tracking weekly KPIs. AI-engine aligns skills that are linked to KPIs, providing personalized coaching to improve weekly performance



impact



faster onboarding, within 30- days led to faster time-to-productivity



2X

reduction in in-class training time, from 5 days to 2 days per store per month



80%

completion rate across stores, higher than industry average



disprz

write to us:
marketing@disprz.com

